

COMUNE DI CASTEL MAGGIORE (BO)

**Miglioramento Sismico -
Scuola dell' Infanzia del
Capoluogo "M. Mezzetti"**
Via della Costituzione, 54
PROGETTO ESECUTIVO

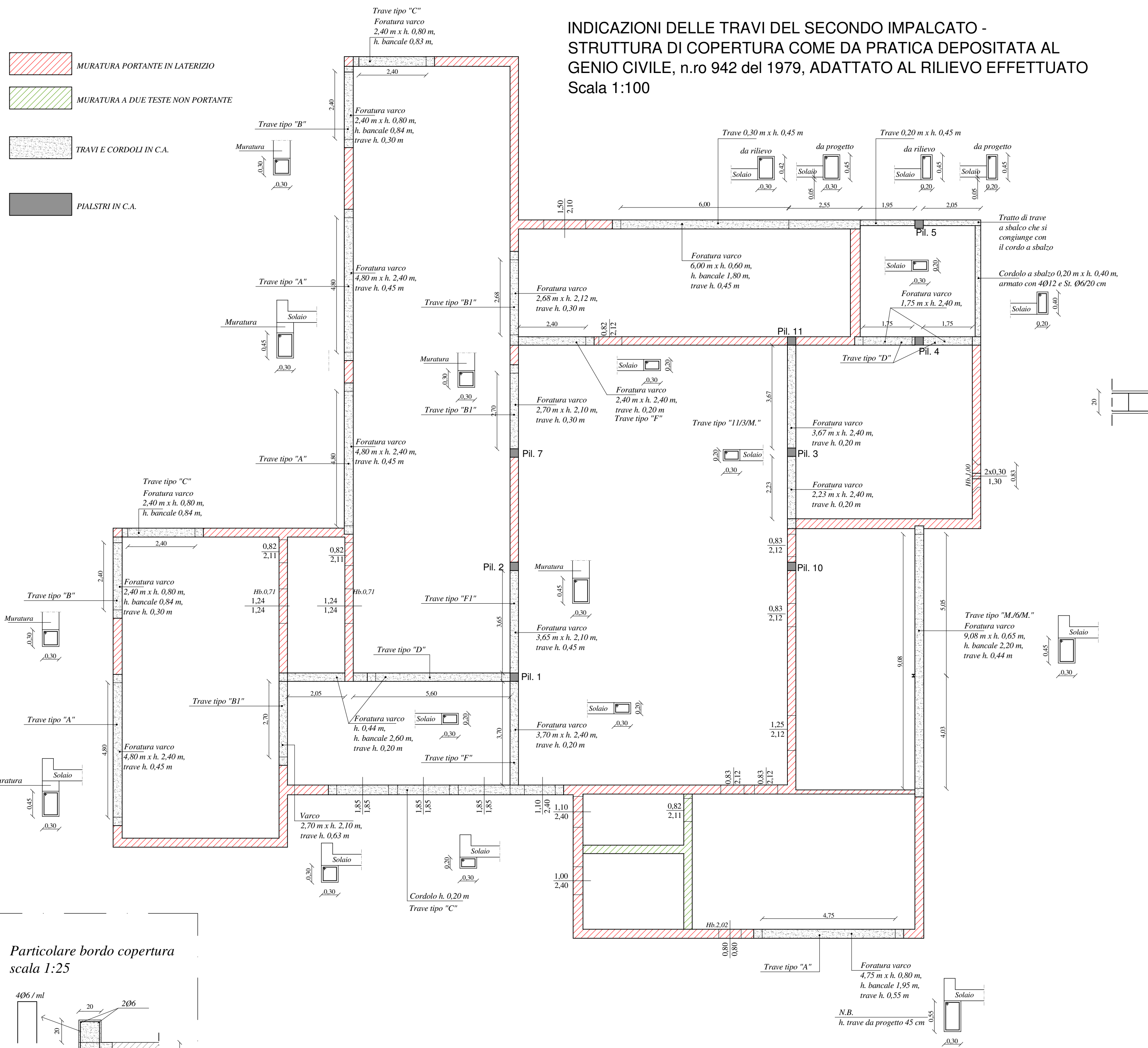
Il Progettista
Ing. VITO MARCHIONNA

Il Committente

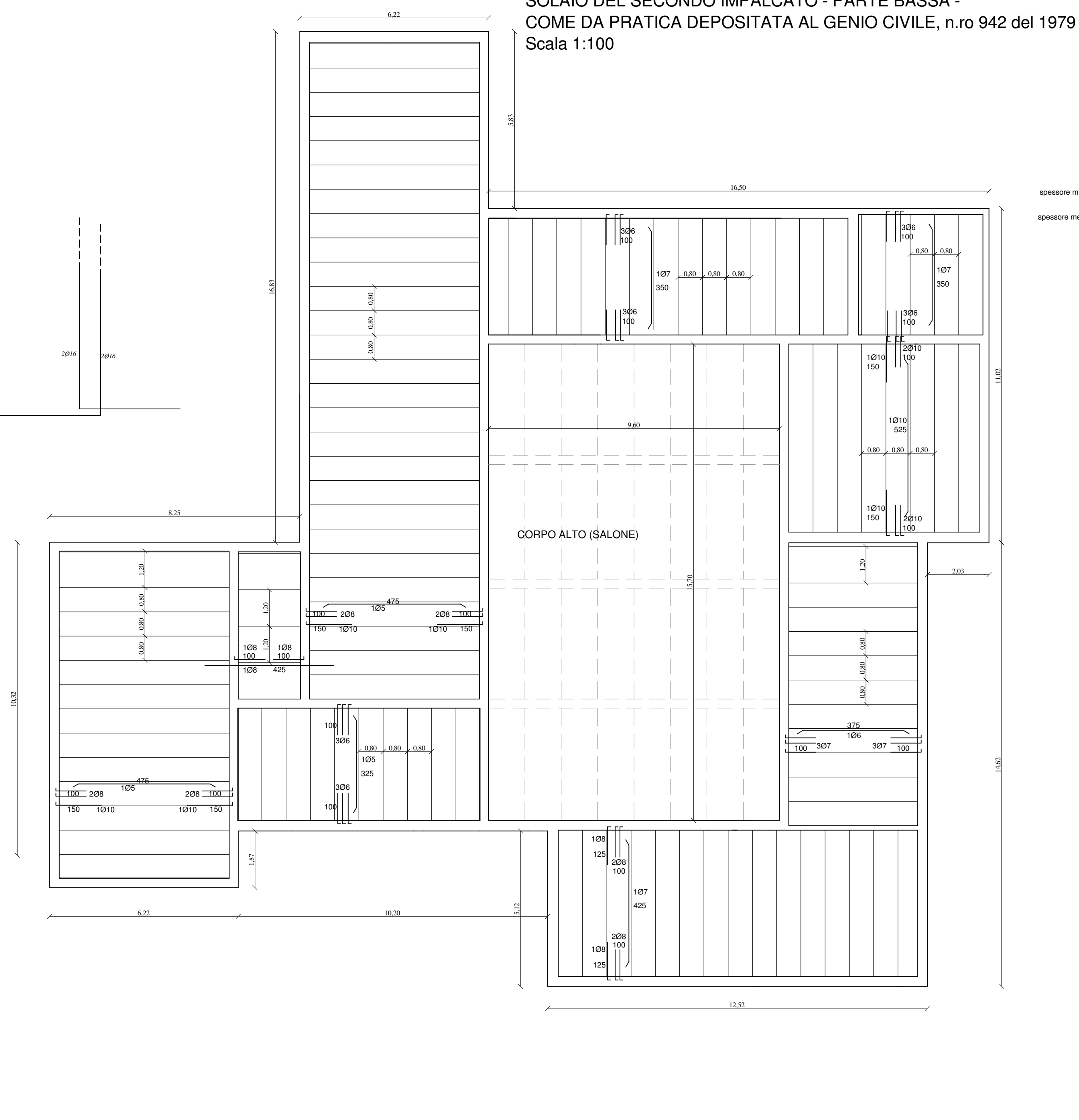
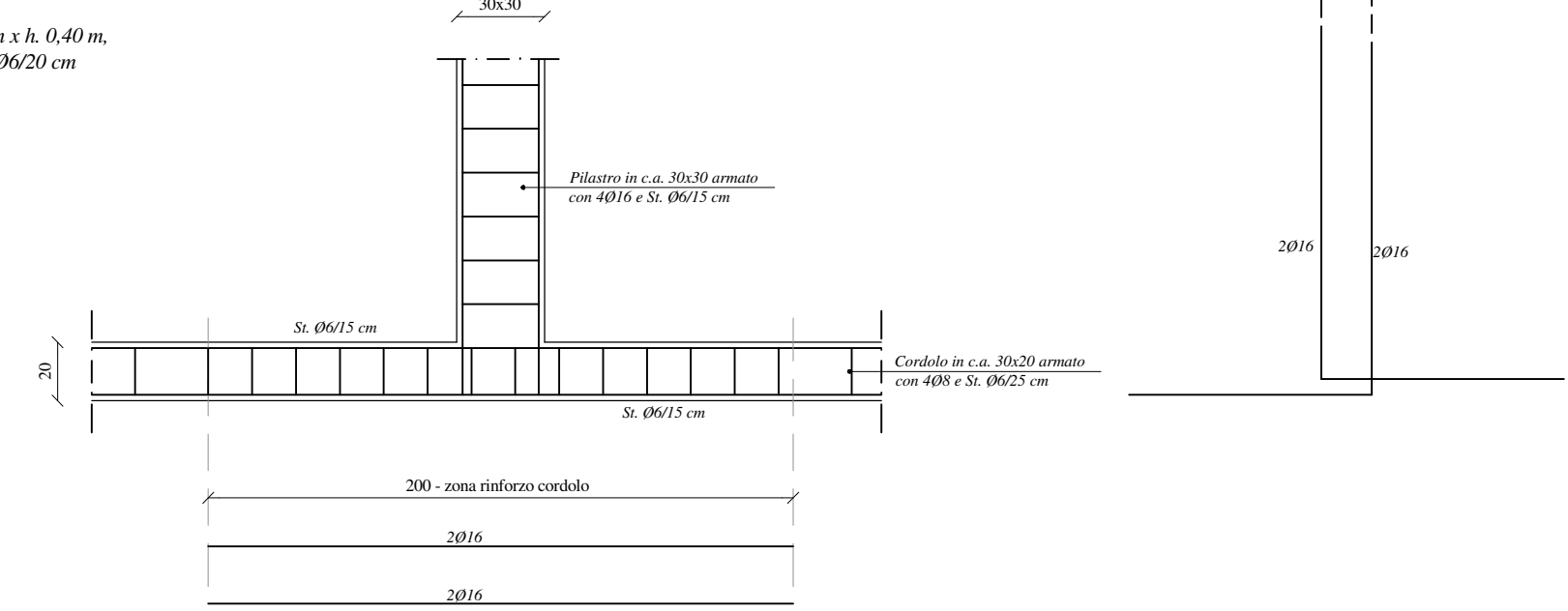
Pareri Enti competenti

**oggetto : pianta e particolari struttura del secondo
impalcato (solaio di calpestio copertura)**
scala : Varie
data : novembre 2020

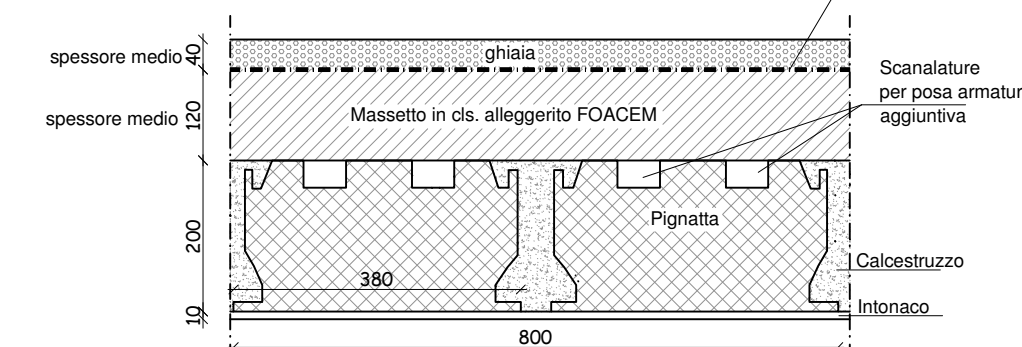
Elaborato
EL VS02



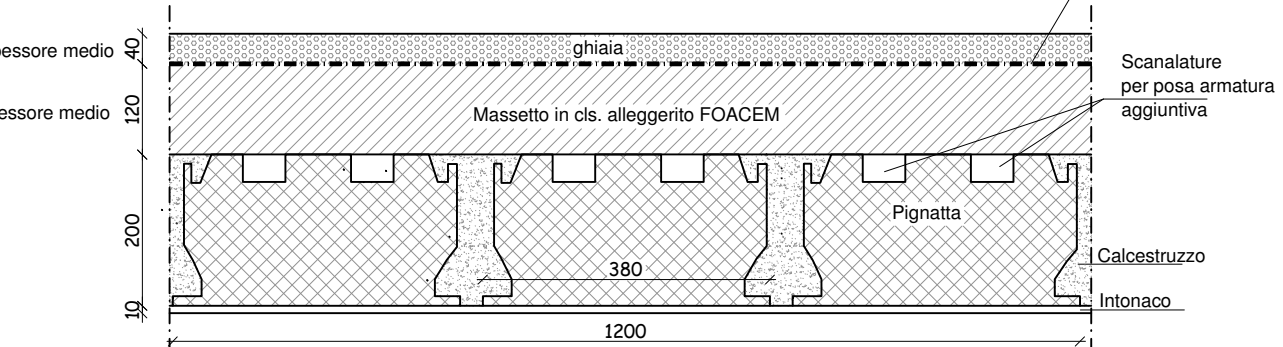
Particolare innesto pilastri 7, 10, 11 sul cordolo in c.a.
scala 1:50



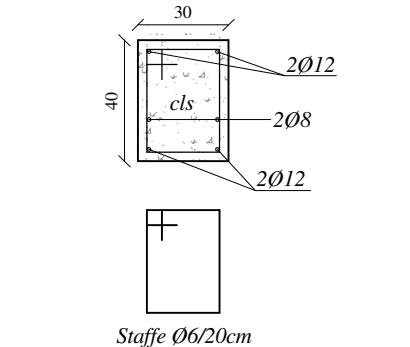
PARTICOLARE SOLAIO
- PANNELLI INTERASSE 80 cm
Scala 1:10



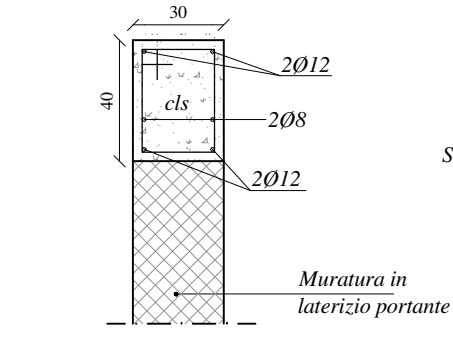
PARTICOLARE SOLAIO
- PANNELLI INTERASSE 120 cm
Scala 1:10



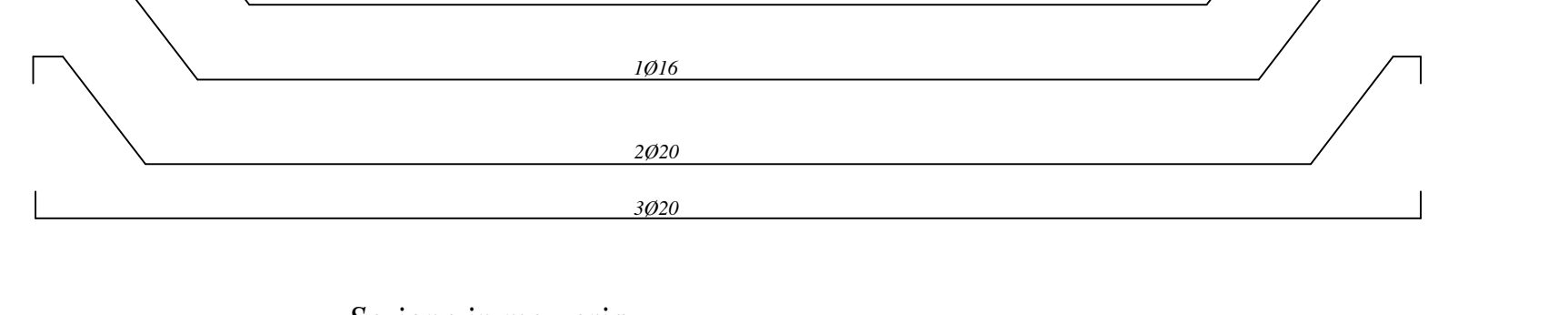
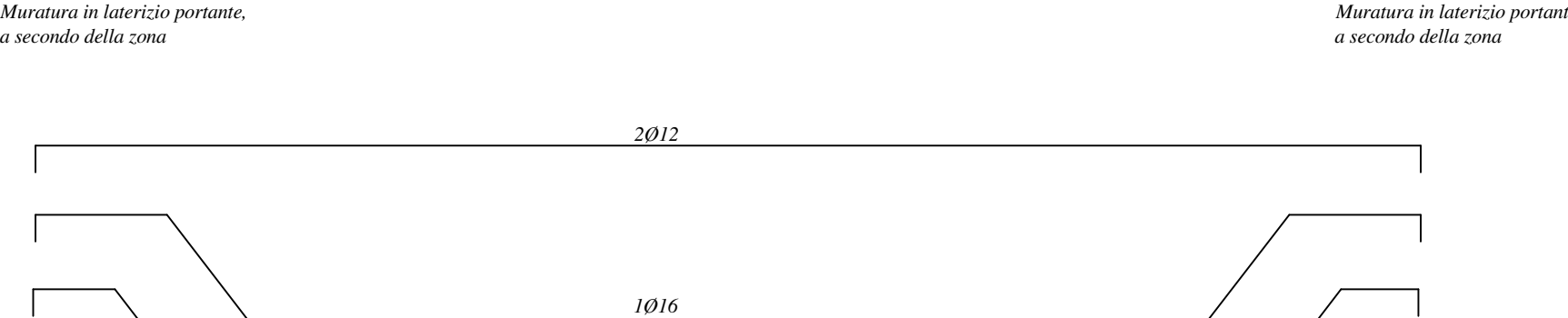
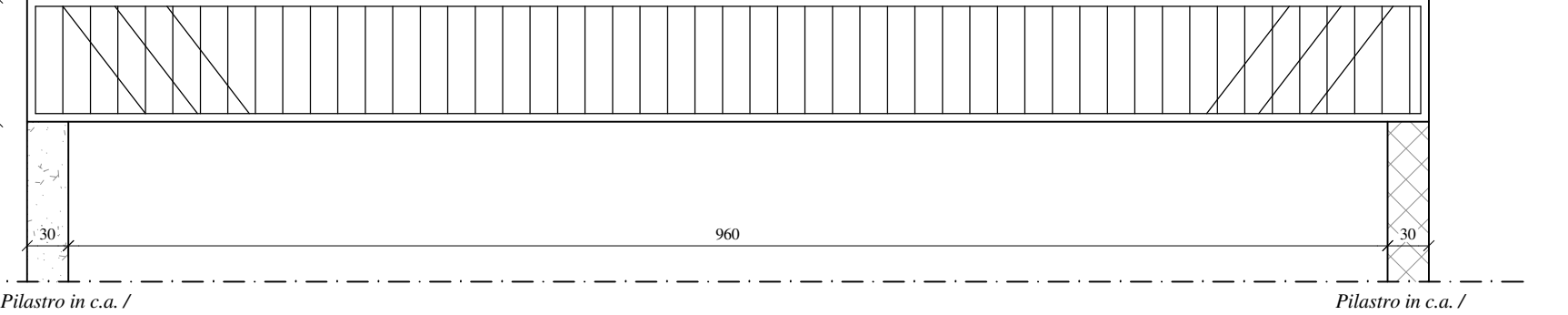
Sezione travi tipo "A"
scala 1:25



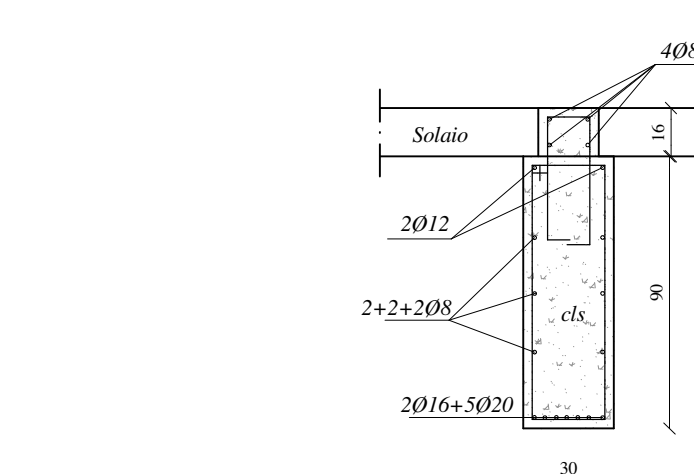
Sezione cordolo tipo "C"
scala 1:25



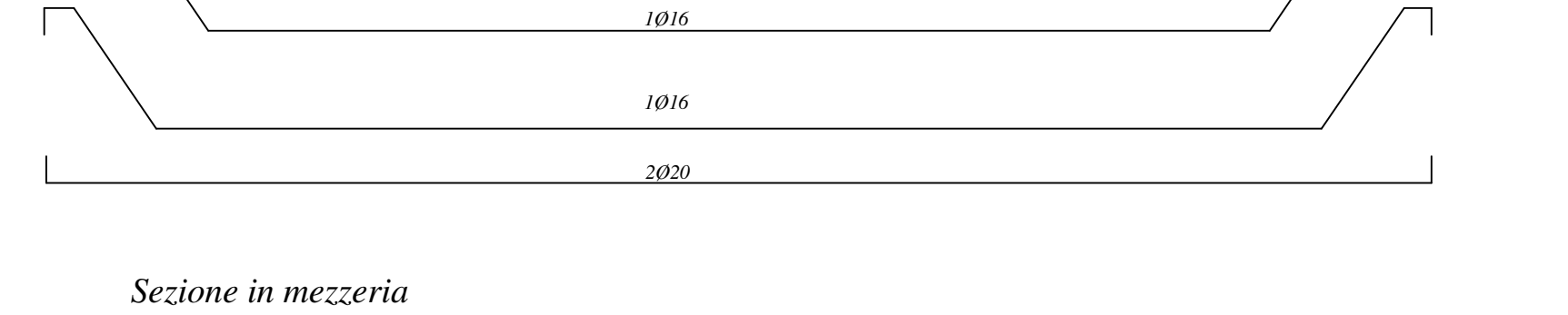
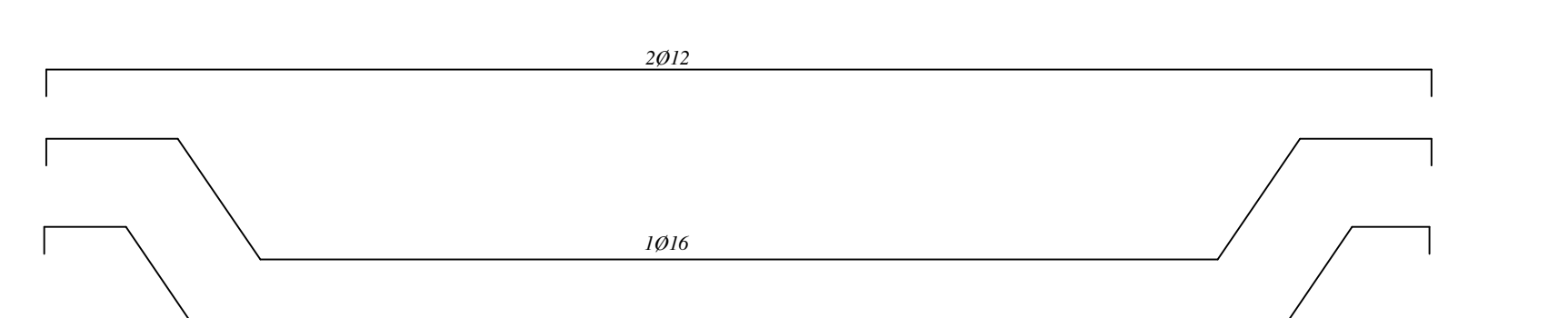
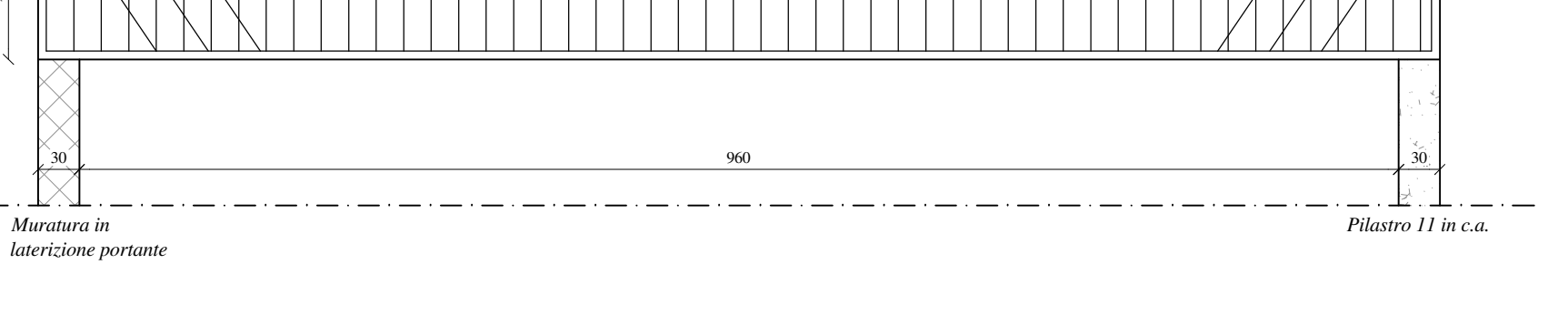
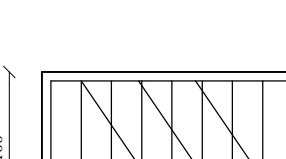
Trave tipo "D"
scala 1:50



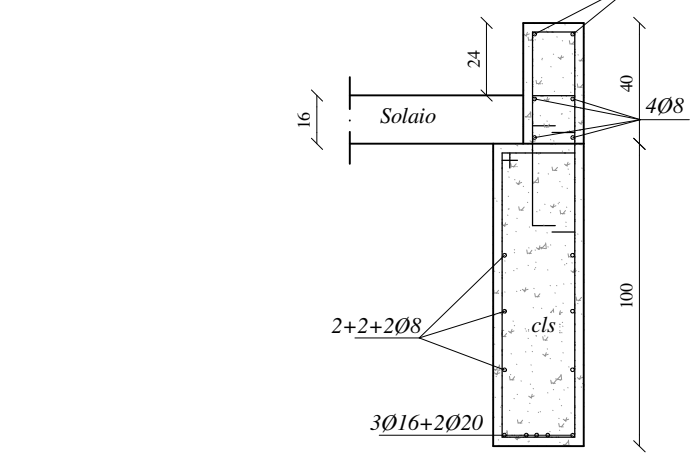
Sezione in mezzeria
scala 1:25



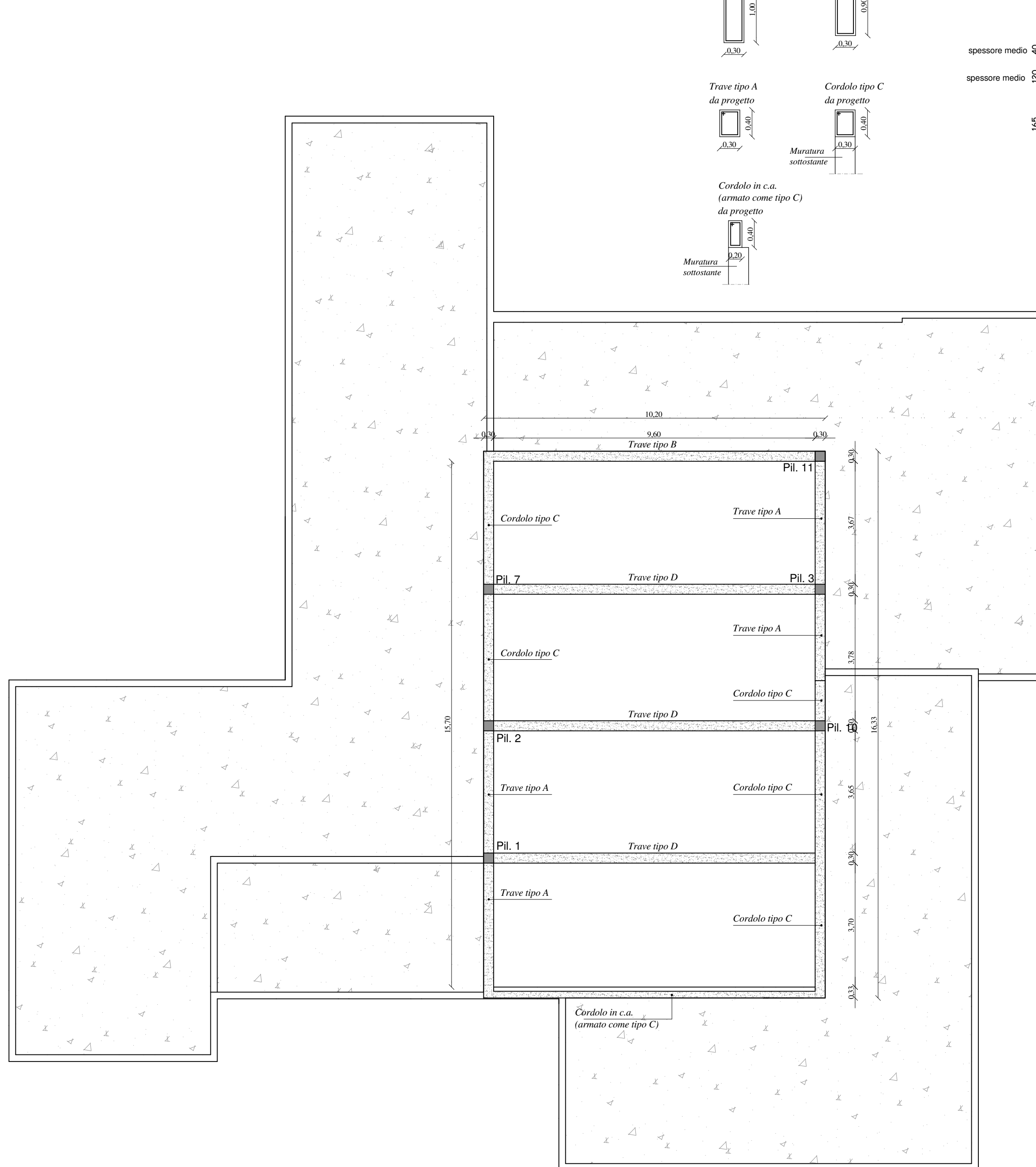
Trave tipo "B"
scala 1:50



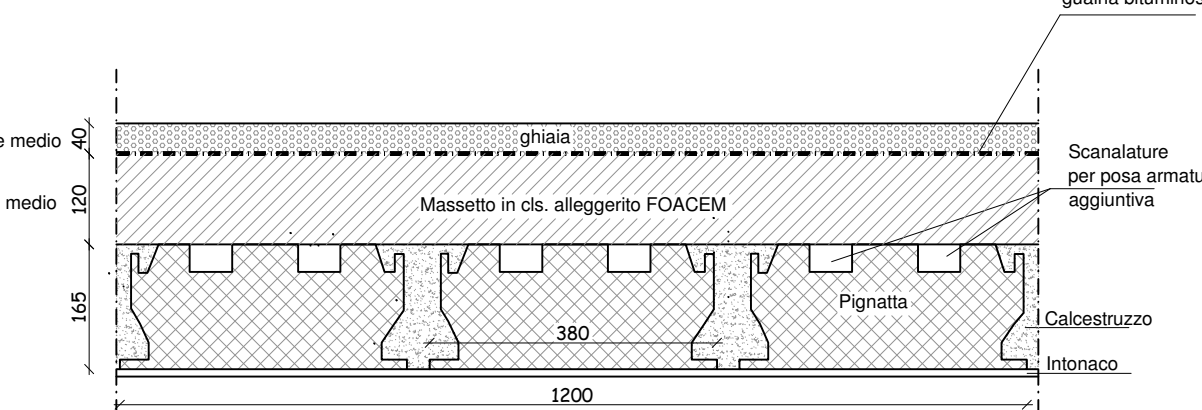
Sezione in mezzeria
scala 1:25



SOLAIO DEL SECONDO IMPALCATO - PARTE ALTA -
COME DA PRATICA DEPOSITATA AL GENIO CIVILE, n.ro 942 del 1979
Scala 1:100



PARTICOLARE SOLAIO
- PANNELLI INTERASSE 120 cm
Scala 1:10



SECONDO IMPALCATO -
SOLAIO DI COPERTURA CORPO ALTO (SALONE)
Scala 1:100

